



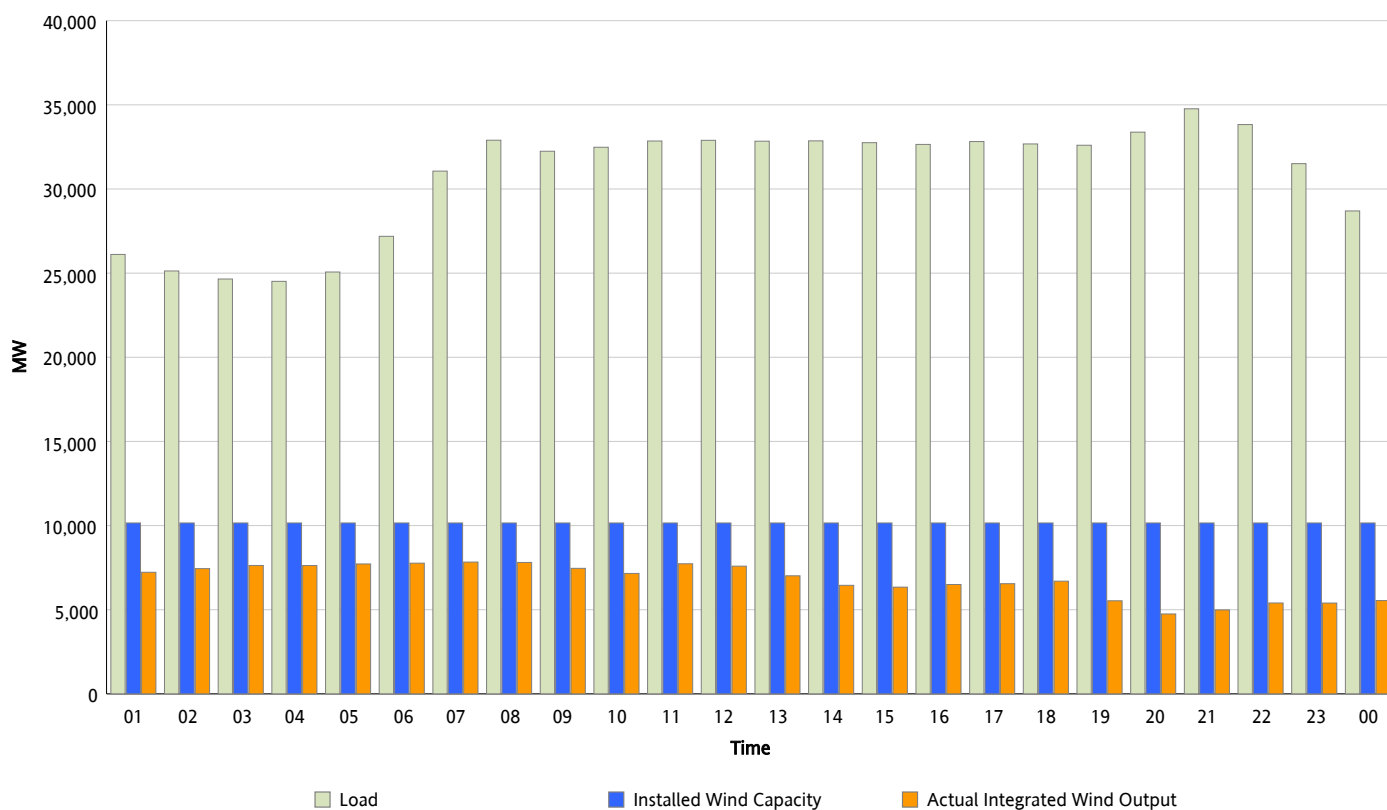
ERCOT Grid Operations

Wind Integration Report : 03/21/2013

Peak Load	34,766 MW
Load Peak Hour (HE)	21
Wind Over Peak	4,989 MW
Wind Record 02/09/13	9,481 MW
Max Wind Value*	7,956 MW
Wind Peak Time	06:53
Wind Integration %	24.6 %

Hourly Average Actual Load vs. Actual Wind Output

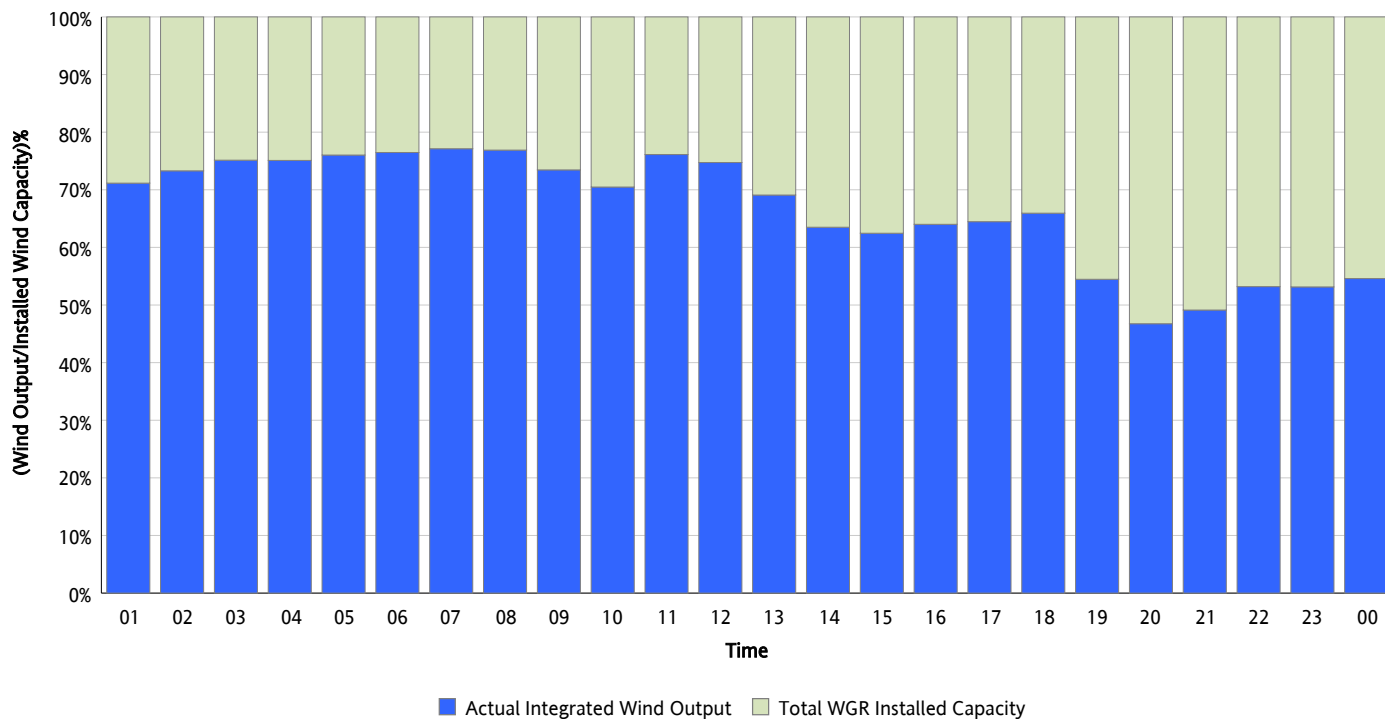
03/21/2013



* Wind Record and Wind Max represent instantaneous values and the rest of the values are integrated over the hour

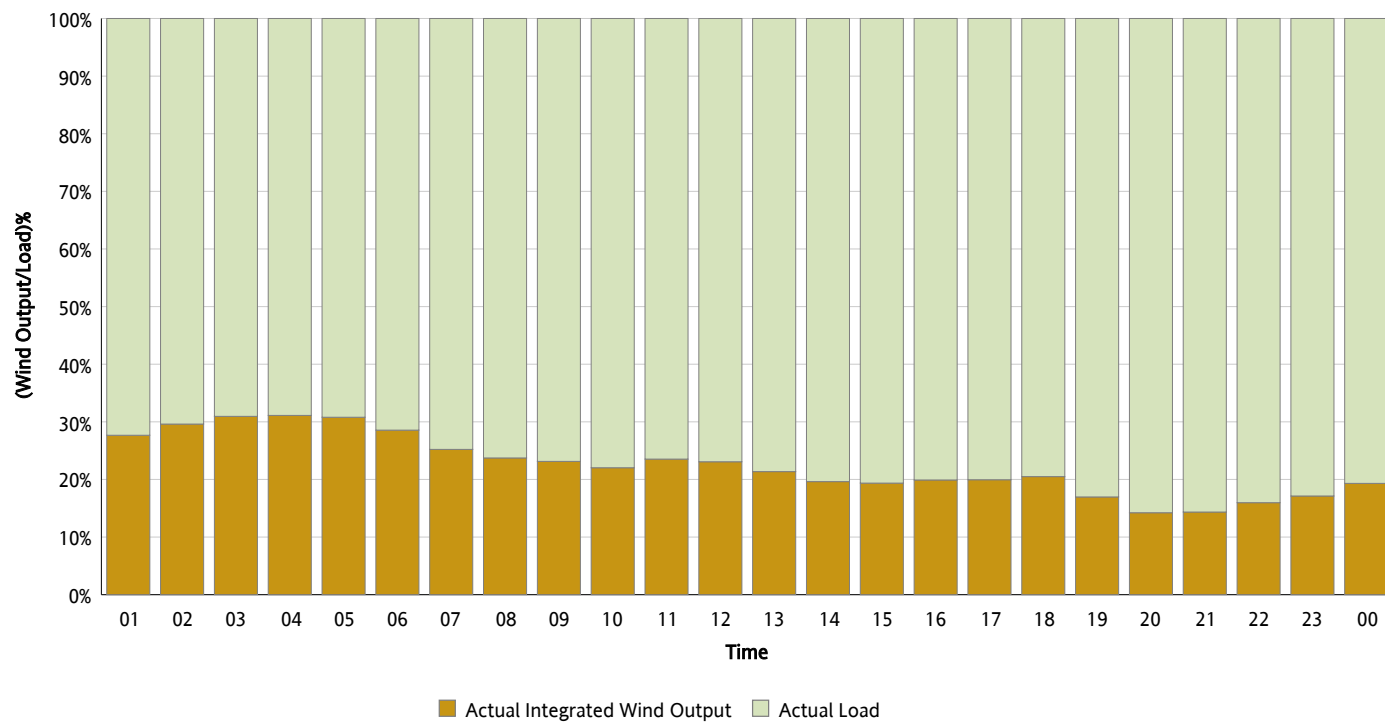
Actual Wind Output as a Percentage of the Total Installed Wind Capacity

03/21/2013



Actual Wind Output as a Percentage of the ERCOT Load

03/21/2013



ERCOT Load vs. Actual Wind Output

03/14/2013 - 03/21/2013

